



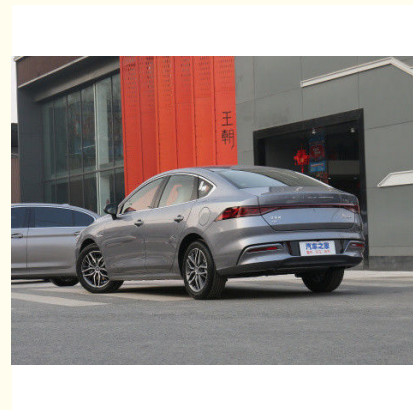
National VI BYD QIN PLUS 2021 EV DM-I 55KM 1.5L 81kW 4 Door 5 Seat Sedan

Our Product Introduction

for more products please visit us on chinese-evcars.com

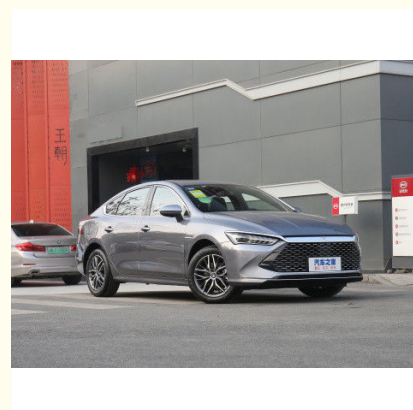
Basic Information

- Brand Name: Green Energy Box
- Model Number: BYD QIN PLUS 2021 DM-i 55KM

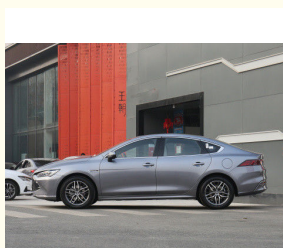
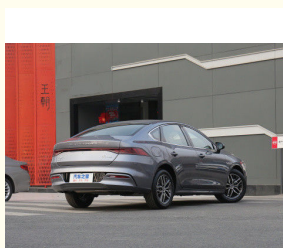


Product Specification

- Car Door Opening Method: Swing Door
- Body Structure: 4-door, 5-seat Sedan
- Battery Capacity: 60 KWh
- Interior Design: Modern
- Model: VW Electric Car
- Power: Electric
- Seating Capacity: 5
- Warranty: 3 Years
- Highlight: byd qin plus ev 55KM, byd qin plus 2021 DM-i, byd qin plus ev 1.5L 81kW



More Images



Product Description

National VI BYD QIN PLUS DM-i 2021 1.5L 81kW sedan

Dynamic performance

This car uses a 1.5L gasoline engine with a maximum power of 81 kilowatts, providing strong power. It realizes dual-energy fuel switching between battery and gasoline, making the power performance more powerful and flexible. Adopting DM-i intelligent power system, the fuel economy and efficiency are higher.

Intelligent driving experience

QIN PLUS is equipped with a wealth of driving assistance systems, including active safety protection, remote control systems, etc. These systems better protect the driver and passengers. The central control screen supports mobile phone screen projection and intelligent voice interaction, making driving smoother and more convenient.

Practicality of electric vehicles

The electric version of this car has a pure electric cruising range of up to 55 kilometers and supports a top speed of 130km/h. The electric version is supported by various preferential policies and has lower usage costs.

Basic parameters	BYD
Manufacturer	compact car
level	plug-in hybrid
Energy type	Country VI
environmental standards; standard	2022.05
time to market	55
NEDC pure electric cruising range (km)	46
wLTC pure electric cruising range (km)	-
CLTC pure electric cruising range (km)	-
Fast charging time (hours)	-
Slow charging time (hours)	-
Fast charging percentage	-
Engine maximum power (kW)	81
Total motor power (kW)	132
Engine maximum torque (N·m)	135
Total motor torque (N·m)	316
engine	1.5L 110 HP L4
Motor(Ps)	180
gearbox	E-CVT continuously variable transmission
Length*width*height (mm)	4765*1837*1495
Body structure	4-door, 5-seat sedan
Maximum speed (km/h)	185
Official 0-100km/h acceleration (s)	7.9
Official 0-50km/h acceleration (s)	1.2
NEDC comprehensive fuel consumption (L/100km)	-
Minimum state of charge fuel consumption (L/100km)	3.8
Electric energy equivalent fuel consumption (L/100km)	1.3
Vehicle warranty	—Year or 100,000 kilometers
First owner warranty policy	-
Body	-
Length(mm)	4765
Width(mm)	1837
Height(mm)	1495
Wheelbase(mm)	2718
Front wheelbase (mm)	1580
Rear wheelbase (mm)	1590
Approach angle (°)	13
Departure angle (°)	14
Maximum grade(%)	30
Maximum climbing angle (°)	16.7
Minimum turning radius (m)	5.5
Body structure	Sedan
Car door opening method	swing door
Number of doors (number)	4
Number of seats (seats)	5
Fuel tank volume (L)	48
Trunk volume (L)	-
Curb weight (kg)	1500
Maximum full load mass (kg)	1875





Green Energy Box

Green Energy Box Auto Service Co., Ltd.



+8613708237426



geb_cnevc@163.com



chinese-evcars.com

No. 87, Information Park, Jinniu District, Chengdu City, Sichuan Province, China