



Bestune NAT MPV Electric Car 425KM Battery Life Fast Charging Online Car Hailing

Our Product Introduction

for more products please visit us on chinese-evcars.com

Basic Information

- Place of Origin: China
- Brand Name: Green Energy Box
- Model Number: Bestune

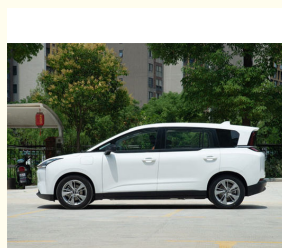


Product Specification

- Manufacturer: Bestune
- Level: MPV
- Energy Type: EV
- CLTC Pure Electric Cruising Range: 425Km
- Body Structure: 4-door, 5-seater MPV
- Battery Type: Iron Phosphate Battery
- Highlight: **Bestune NAT MPV electric car,
Bestune NAT 425KM battery life,
Bestune NAT For online car hailing**



More Images



Product Description

Bestune NAT, a cheap MPV electric car, 425KM battery life, fast charging, Uber online car hailing.

Pentium NAT was born on the FAW FME pure electric platform and has strong comprehensive qualities. It has been put into the market as early as 2021 and has achieved many achievements. In the past 2022, the national operation scale of Bestune NAT exceeded 30,000 units, and it also won the annual online car-hailing model sales TOP award. The 2023 Pentium NAT PRO, which was launched in February this year, has also gone a step further and is more in line with the domestic online car-hailing usage environment.

The 2023 Bestune NAT PRO has a variety of models to choose from. In terms of specific models, it is divided into charging version, battery swapping version, charging extended version and battery swapping extended version, which can meet the needs of different online ride-hailing drivers. The wheelbase is 2850mm, and the length of the regular version is 4450mm and the extended version is 4592mm, which are enough to meet different online ride-hailing regulations in various places. The emergence of battery swapping and charging versions has solved the energy replenishment problem for most online ride-hailing drivers. At the three-electric level, the 2023 Pentium NAT PRO also stands on the shoulders of giants. The batteries are provided by CATL and BYD, the two industry giants, the electric drive is provided by Huawei, and the electronic control is provided by United Electronics.

The 2023 Pentium NAT PRO has a pure electric cruising range of more than 400 kilometers. The motor has a maximum power of 120 kilowatts and a maximum torque of 155 Nm. The energy consumption per 100 kilometers is less than 13.2kWh. It supports 3-minute battery replacement, 30-minute fast charging and With various energy replenishment methods such as 8-hour slow charging, online ride-hailing drivers will naturally feel more comfortable using it.





Basic parameters			
Manufacturer	BESTUNE	Wheelbase (mm)	2850
MODEL	BESTUNE NAT	Approach angle(°)	19
Pure electric cruising range (km)	401/419/425	departure angle(°)	26
Battery Type	Lithium iron phosphate battery	ABS Anti-lock Braking/Brake Assist (EBA/BA etc.)	Standard
Motor total horsepower (Ps)	163Ps	Brake force distribution (EBD/CBC, etc.)	Standard
Total motor power (kW)	120kw	airbag	main driver's seat/ co-pilot seat
Motor total torque (N m)	155	Vehicle mass (kg)	1700Kg
battery charging time	Fast charge 0.5hours	Maximum full load mass (kg)	2075Kg
Quick recharge percentage	80	battery warranty	unlimited
Gearbox Description	Standard	Motor description	Pure electric

Body structure	4-door 5-seat MPV	drive mode	front-wheel drive
LxWxH(mm)	4450*1840*1680	front suspension	Macpherson independent suspension
Trunk volume(L)	454	rear suspension form	Torsion beam non - independent suspension
Maximum speed (km/h)	140	Front brake type	ventilated disc
Electricity consumption per 100 kilometers (kWh/100 kilometers)	/	Complete vehicle warranty	3 years or 200,000 km
Level	MPV	Parking brake type	Electronic parking



Green Energy Box Auto Service Co., Ltd.



+8613708237426



geb_cnevcar@163.com



chinese-evcars.com

No. 87, Information Park, Jinniu District, Chengdu City, Sichuan Province, China