



GAC Trumpchi E9 Fully Electric Car MPV Plug In Hybrid Engine 2.0T

Our Product Introduction

for more products please visit us on chinese-evcars.com

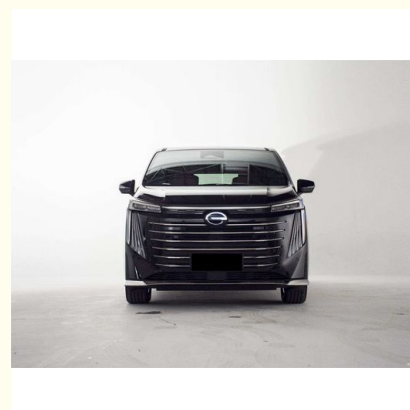
Basic Information

- Place of Origin: China
- Brand Name: Green Energy Box
- Model Number: GAC Trumpchi E9

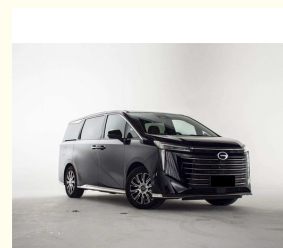
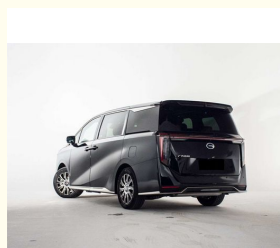
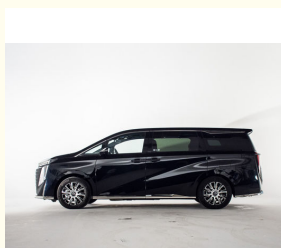
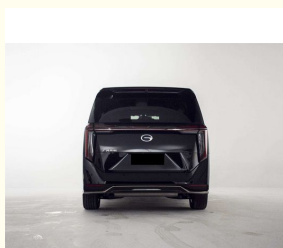


Product Specification

- Energy Type: Plug-in Hybrid
- Level: Medium And Large MPV
- Body Structure: 5-door, 7-seater MPV
- Comprehensive Driving Mileage: 1100KM
- Length*width*height (mm): 5193*1893*1823
- Engine: 2.0T
- Highlight: GAC Trumpchi E9 Chinese Electric MPV,
GAC Trumpchi E9 Plug In Hybrid,
GAC Trumpchi E9 mpv plug in hybrid



More Images



Product Description

GAC Trumpchi E9 Chinese version Alpha, a luxurious large-scale plug-in hybrid MPV with a comprehensive range of 1100KM

First of all, we will remind you that Trumpchi is a brand under GAC Group that was launched in 2010. Speaking of GAC, it is one of the biggest Chinese automakers that manufactures Toyota, Mitsubishi and Honda cars. Among these Japanese automakers, GAC's relations with Toyota are probably the warmest. At least, GAC developed its PHEV powertrain called THS. Trumpchi vehicles are manufactured in Guangzhou, China. Currently, its model line consists of 13 vehicles. Today, Trumpchi has launched the E9 PHEV MPV.

The GAC Trumpchi E9 is an impressive MPV with wing-shaped headlights, a frameless grille, a high hood line and an LED strip in the back that connects two vertical taillights. Moreover, the E9 has a special version called "Grandmaster Edition". It has an enormous chrome-plated grille that occupies almost all the front end. It looks irrationally, needlessly, but very cool.

Basically, the Trumpchi E9 is based on the other GAC's car called M8. So, these cars' dimensions are quite similar. The E9's length, width and height are 5193 mm (5212 mm for the Grandmaster Edition), 1893 mm and 1823 mm, respectively. As for the wheelbase, it is 3070 mm. For clarity, the E9 is 248 mm longer, 43 mm wider and 67 mm lower than the Toyota Alphard. All trim levels of the E9 got 225/60 R18 wheels. And they can be equipped with an electromagnetic suspension to enhance driving comfort.

Inside, the Trumpchi E9 has three screens in the center console. Diameter of the main monitor reaches 14.6 inches while the instrument panel and the front passenger screen are both 12.3-inch. The second row of the Trumpchi E9 has two captain chairs. Each of them has its own 5-inch touch screen integrated in armrest. By using it, passengers can adjust their seats. And, in case they are bored, there is a 15.6-inch screen in the ceiling. So, the E9 got 6 screens in total. Moreover, it has got a Yamaha sound system with 16 speakers. The third row is pretty basic with three seats.

Speaking about the powertrain, the E9 has a 2.0-liter turbocharged petrol-powered ICE under the hood that generates 190 hp and 330 Nm. It is paired with an electric motor for 182 horses and 300 mm by the 2DHT transmission. The total output of this powertrain reaches 373 hp and 630 Nm. So, it can speed up from 0 to 100 km/h in 8.8 seconds. As for the battery, it is ternary (NMC) for 25.57 kWh. In EV mode, the E9 can drive up to 106 km on a single charge. As for the PHEV mode, its range reaches 1,032 km (WLTC). You can charge the battery with DC charging in just 30 minutes. As for the fuel consumption, it is 6 L/100km.



Luxurious private space

Semi-aniline premium leather first class seats



Super fast charge

Charge from 30% to 80% in just 30 minutes



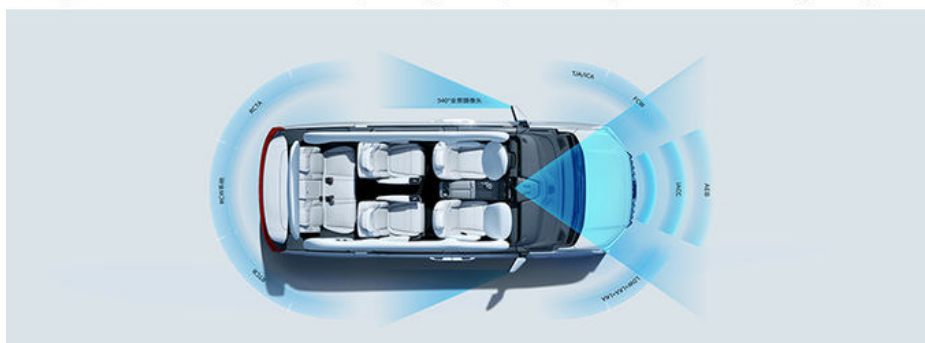
High energy density magazine battery

Five layers of protection, higher security.



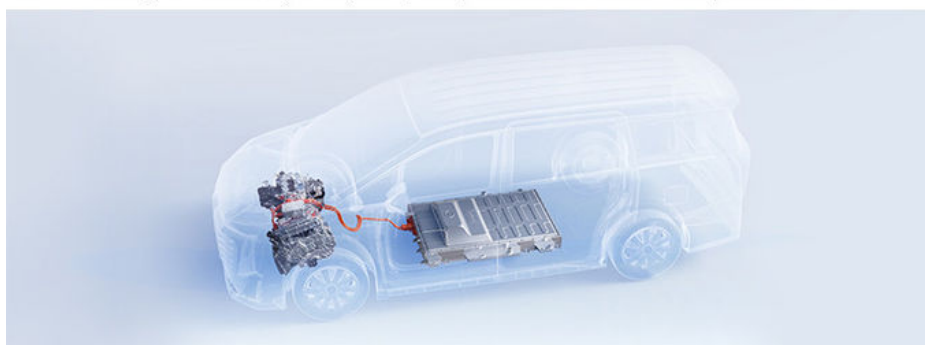
Gac patented rear windshield airbag

Unique in the same class of models, airbag matrix, all-round protection of driving safety



High performance battery system

2.0TM intelligent electric hybrid system, comprehensive maximum torque 630N · m











Energy type	plug-in hybrid
electric motor	2.0T 190-horsepower L4 plug-in hybrid
Pure electric cruising range (km)	136
Charging time (hours)	Fast charging 0.5 hours, slow charging 3.5 hours
Maximum power(kW)	274
gearbox	2nd gear DHT
Maximum speed (km/h)	175
Curb weight (kg)	2420
engine model	4B20J2
Motor type	Permanent magnet/synchronous



Green Energy Box Auto Service Co., Ltd.



+8613708237426



geb_cnevc@163.com



chinese-evcars.com

No. 87, Information Park, Jinniu District, Chengdu City, Sichuan Province, China