



Neta U-II Small SUV Electric Cars 400KM-610KM L2 Assisted Driving

Our Product Introduction

for more products please visit us on chinese-evcars.com

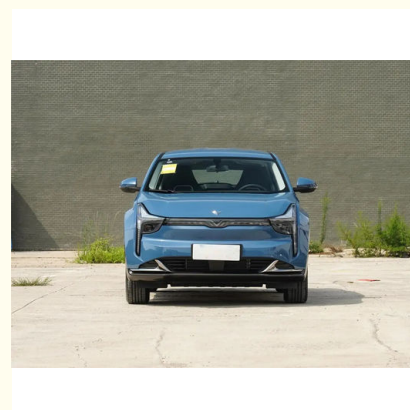
Basic Information

- Place of Origin: China
- Brand Name: Green Energy Box
- Model Number: Neta U-II

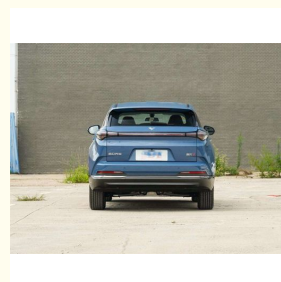
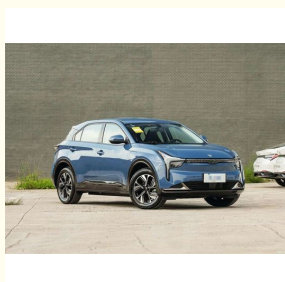


Product Specification

- Manufacturer: Neta
- Level: Small SUV
- Energy Type: Pure Electric
- CLTC/NEDC Pure Electric Cruising Range: 400KM-610KM
- Body Structure: 5-door, 5-seater SUV
- Fast Charging Time (hours): 0.5
- Highlight: **Neta U-II small suv electric cars, small suv electric cars L2 assisted driving, Neta U-II small electric suv**



More Images



Product Description

Neta U-II is a small pure electric SUV with a range of 400KM-610KM. Low price, can be upgraded to L2 assisted driving

The size of the Neta U-II is the same as the Neta U: 4530/1860/1628 mm and a wheelbase of 2770 mm. The C-pillars are blackened to create a floating roof effect. Other notable features include an electric tailgate, a panoramic sunroof, heated front seats, and a built-in driving recorder.

In terms of safety, the Neta U-II comes with a level 2.5+ driving assistance system supported by 5 millimeter-wave radars and 12 ultrasonic radars to achieve features including lane change assist, forward collision warning, automatic emergency braking, traffic sign recognition, and autonomous parking.

The interior offers two color schemes: black, pink & white. Other features include a dual 12.3-inch control center screen and a double-spoke steering wheel. The cockpit system is supported by the third-generation Qualcomm Snapdragon 8155 chip.

The Neta U-II offers three NEDC cruising range options: 400 km, 500 km, and 610 km. The 610 km model is equipped with a 170 kW/310 Nm electric motor, and the acceleration time from 0 – 100km/h is 7 seconds. The other models are equipped with a 120 kW/210 Nm electric motor, and the acceleration time from 0 – 100 km/h is within 9.5 seconds.

Product Parameter

| Item | Nezha U 2023 Challenge Edition U-II. 400 Lite | Nezha U 2022 U-II. 500 Premium Edition |
|------------------------------|---|---|
| Manufacturers | United Cars | United Cars |
| Length width height (mm) | 4549x1860x1628 | 4549x1860x1628 |
| Wheelbase(mm) | 2770 | 2770 |
| Motor | Pure electric 95 hp | Pure electric 163 hp |
| Body structure | 5-door, 5-seat SUV | 5-door, 5-seat SUV |
| Energy type | Pure electric | Pure electric |
| Type of gearbox | Electric vehicle single-speed gearbox | Electric vehicle single-speed gearbox |
| Maximum power(kW) | 120(163Ps) | 120(163Ps) |
| Maximum torque(N·m) | 210 | 210 |
| Maximum speed (km/h) | 150 | 150 |
| Charging time (hours) | Fast charge 0.5 hours Slow charge for 7 hours | Fast charge 0.5 hours Slow charge 8.5 hours |
| Drive method | Front drive | Front drive |
| Sunroof type | A panoramic sunroof can be opened | A panoramic sunroof can be opened |
| Seat material | Imitation leather | Imitation leather |
| Dipped beam | LED | LED |
| Center display size (inches) | 12.3 | 12.3 |



Jet Grey



Jade White



Coloured Glaze Green



Auspicious Purple











Green Energy Box

Green Energy Box Auto Service Co., Ltd.



+8613708237426



geb_cnevc@163.com



chinese-evcars.com

No. 87, Information Park, Jinniu District, Chengdu City, Sichuan Province, China