



GAC M8 Chinese Fuel Powered Car 5 Door 7 Seater MPV Engine 2.0T

Our Product Introduction

for more products please visit us on chinese-evcars.com

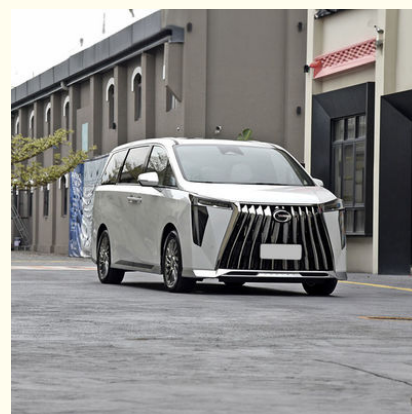
Basic Information

- Place of Origin: China
- Brand Name: Green Energy Box
- Model Number: GAC M8

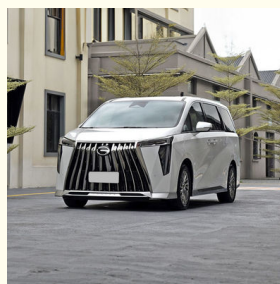
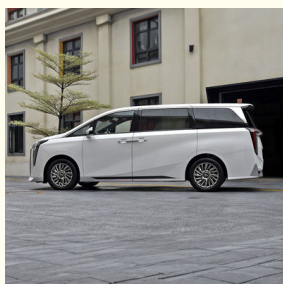


Product Specification

- Manufacturer: GAC
- Level: Large MPV
- Energy Type: Gasoline/hybrid
- Body Structure: 5-door, 7-seater MPV
- Engine: 2.0T
- Driving Direction : Left
- Highlight: **GAC M8 Chinese Fuel Powered Car,
GAC 5 door 7 seater MPV,
GAC 7 seater MPV Engine 2.0T**



More Images



Product Description

GAC 5-door, 7-seater MPV, with hybrid and gasoline power options, and appearance divided into Master and M8

The new Trumpchi M8, a large seven-seat MPV for the Chinese car market, has arrived at dealers in China. The Trumpchi M8 comes in both hybrid and petrol versions. The car is expected to launch in the fourth quarter of this year.

The size of the car is 5193/1893/1823mm with a 3070mm wheelbase. The petrol version weighs 2060kg while the hybrid weighs 2245kg. From the side, the car uses a one-piece door handle and has a floating roof.

At a first glance, the black and white color scheme of the interior creates a stark contrast. Furthermore, gold trim strips are added to the center console to enhance the luxurious atmosphere of the car. The interior is equipped with a 12.3-inch instrument panel, a 14.6-inch floating central control screen, and a three-spoke steering wheel.

The petrol version gets a new 2.0 turbo with 251hp and 380Nm. The hybrid version gets a 190hp 2.0 turbo with an electric motor. Trumpchi hasn't disclosed the power of the electric motor yet, but the combined output is expected to hover around 250hp as well. Gearboxes: CVT or 8-speed automatic.

Specification

Steering	Left
Model Number	M8
Brand Name	Trumpchi M8
Type	MPV
Dimension	5212*1893*1823
Maximum Torque(Nm)	300-400Nm
Keyword	Hybrid Car
Body structure	5-door 7-seater MPV
Fuel	Hybrid
TPMS(Tire Pressure Monitor System)	Yes
ESC(Electronic Stability Control System)	Yes
ABS(Antilock Braking System)	Yes
Rear Camera	360°
Daytime Light	LED
Copilot Seat Adjustment	Electric
Driver's Seat Adjustment	Electric

INTERIOR DISPLAY

Extreme Driving Fun



PERFORMANCE

Extreme Driving Fun



COLOR SELECTION

Please consult us for details of vehicle model



● WHITE

● BLACK



● GOLD

● BLUE

PARAMETER

Type of energy :	Petrol
Maximum speed (km/h):	200
WLTC combined fuel consumption (L/100km):	8.7
Engines:	2.0T 252hp L4
Max. power (kW):	185(252Ps)
Max. torque (N-m):	390
LxWxH(mm):	5089x1884x1822







Trumpchi M8

Large Space/High Quality

[View More](#)



Green Energy Box Auto Service Co., Ltd.



+8613708237426



geb_cnevcars@163.com



chinese-evcars.com

No. 87, Information Park, Jinniu District, Chengdu City, Sichuan Province, China