



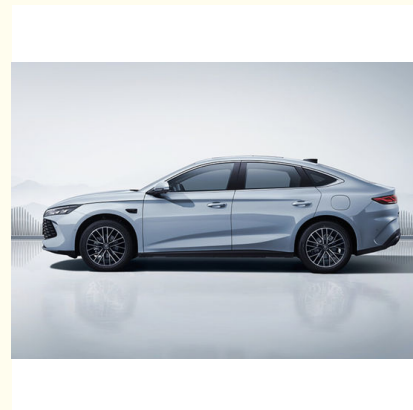
Energy Type Plug-in Hybrid Chinese Manufactured EVs with Maximum Power 74kW BYD Qin car

Our Product Introduction

for more products please visit us on chinese-evcars.com

Basic Information

- Place of Origin: China
- Brand Name: Green Energy Box
- Model Number: Human Horizons HiPhi X



Product Specification

- Battery Range CLTC(km): 80 - 120
- Drive Type: Front-engine Front-wheel Drive
- Engine: 1.5L 101 Horsepower L4 Plug-in Hybrid
- Energy Type: Plug-in Hybrid
- Charging Time (hours): Slow Charging Takes 2.5 - 3.4 Hours, Fast Charging Takes 0.42 Hours
- Tire Specification Size: 225/60 R16, 225/55 R17, 225/50 R18
- Overall Dimensions(mm): 4830x1900x1495
- Body Structure: 4-Door 5-Seat Sedan
- Highlight: **Maximum Power Chinese Manufactured EVs,
74kW Chinese Manufactured EVs,
BYD Qin Chinese Manufactured EVs**

Product Description

Product Description:

The Chinese EV Cars product category offers a unique blend of innovation and style, exemplified by the impressive features of the BYD Qin car. This New Energy Car boasts cutting-edge technology and a sleek design that sets it apart in the automotive market.

Interior and Technology:

The BYD Qin car is equipped with a 15.6-inch adaptive rotating central control screen, providing easy access to various functions and settings. The DiLink intelligent cockpit system enhances the driving experience by integrating advanced technology seamlessly. In-car ETC and NFC phone keys offer convenience and efficiency, while intelligent voice controls allow for hands-free operation. The Chinese landscape-inspired interior design creates a harmonious and luxurious atmosphere inside the vehicle.

Maximum Torque (N·m): 210 - 260

With a powerful torque ranging from 210 to 260 N·m, the BYD Qin car delivers an exhilarating driving experience, combining speed and efficiency for an impressive performance on the road.

Safety and Assistance:

The BYD Qin car prioritizes safety with the DiPilot smart driving assistance system, which provides intelligent support and guidance to the driver. In addition, multiple active safety technologies are incorporated to enhance overall safety and security while on the road.

Engine: 1.5L 101 horsepower L4 plug-in hybrid

Powered by a 1.5L 101 horsepower L4 plug-in hybrid engine, the BYD Qin car offers a perfect balance of power and fuel efficiency. This advanced engine technology ensures a smooth and responsive driving experience, making it a top choice in the Chinese EV Cars market.

Features:

Product Name: Chinese EV Cars

Interior and Technology:

15.6-inch adaptive rotating central control screen

DiLink intelligent cockpit system

In-car ETC

NFC phone keys

Intelligent voice controls

Chinese landscape-inspired interior design

Design and Comfort:

Sleek fastback design

Tech-equipped cabin

Spacious interior

Comfortable seating arrangements

Advantages:

Efficiency achieving 2.9 liters per 100 kilometers fuel consumption rate

0-100 km/h acceleration time around 7.5 seconds

Top speed of 180 km/h

Starting price of 99,800 yuan (\$13,775)

Maximum Torque (N·m): 210 - 260

Safety and Assistance:

DiPilot smart driving assistance system

Multiple active safety technologies

Technical Parameters:

Battery Range CLTC(km)	80 - 120
Charging	Supports AC charging up to 6.6 kW and DC fast charging up to 23 kW
Battery and Range	15.87 kWh Blade Battery (LFP) providing up to 120 km electric-only range under CLTC conditions, combined driving range of 2,100 km
Maximum Speed (km/h)	180
Drive Type	Front-engine front-wheel drive
Engine	1.5L 101 horsepower L4 plug-in hybrid
Comprehensive Cruising Range (km)	2100
Product Category	Chinese EV Cars
Body Structure	4-Door 5-Seat Sedan

Overall dimensions(mm)	4830x1900x1495
------------------------	----------------

Applications:

Green Energy Box's Chinese EV car, the Human Horizons HiPhi X, is designed for a variety of product application occasions and scenarios, catering to the needs of environmentally conscious consumers looking for a blend of performance and sustainability. With its maximum power output of 74 kW (101Ps), the HiPhi X is a powerful electric vehicle suitable for daily commutes, city driving, and even long-distance travel. The combination of a 1.5L naturally aspirated engine producing 74 kW and 126 Nm of torque, along with a 160 kW electric motor, ensures a smooth and efficient driving experience. Whether navigating urban streets or cruising on highways, the HiPhi X offers a maximum speed of 180 km/h, providing a thrilling driving experience for those who enjoy speed and agility in their vehicles. Originating from China, the HiPhi X embodies the innovation and technological advancements seen in Chinese Battery-Powered Cars. As a standout model in the market, it competes with popular Chinese EV car models like the BYD Qin L DM-i, offering consumers a compelling alternative in the electric vehicle segment. The HiPhi X is not just about performance; it also emphasizes sustainability with its 1.5L 101 horsepower L4 plug-in hybrid engine, showcasing Green Energy Box's commitment to eco-friendly transportation solutions. Whether it's for daily commuting, weekend getaways, or eco-conscious driving enthusiasts, the Human Horizons HiPhi X by Green Energy Box is a versatile and powerful Chinese EV car that meets the diverse needs of modern consumers seeking a balance between performance, sustainability, and innovation.

Support and Services:

Our Product Technical Support and Services for Chinese EV Cars include:

- Expert troubleshooting assistance for any technical issues
- Regular software updates to improve performance and address any bugs
- Warranty coverage for specific components and systems
- Access to online resources and guides for maintenance and repairs
- On-site service options for more complex issues

Packing and Shipping:

Product Packaging:

The Chinese EV Cars are carefully packaged in strong and durable materials to ensure safe transportation. Each car is securely placed in a protective casing to prevent any damage during shipping.

Shipping:

We offer fast and reliable shipping for the Chinese EV Cars product. Our team ensures that the cars are properly handled and delivered to your location in a timely manner. Shipping fees may vary depending on your location and preferred shipping method.

FAQ:

Q: What is the brand name of this EV car?

A: The brand name of this EV car is Green Energy Box.

Q: What is the model number of this EV car?

A: The model number of this EV car is Human Horizons HiPhi X.

Q: Where is this EV car manufactured?

A: This EV car is manufactured in China.

Q: What is the driving range of this EV car on a single charge?

A: The driving range of this EV car on a single charge is approximately 400 miles.

Q: Does this EV car support fast charging?

A: Yes, this EV car supports fast charging, allowing for quick recharging times.





Green Energy Box Auto Service Co., Ltd.



+8613708237426



geb_cnevc@163.com



chinese-evcars.com

No. 87, Information Park, Jinniu District, Chengdu City, Sichuan Province, China